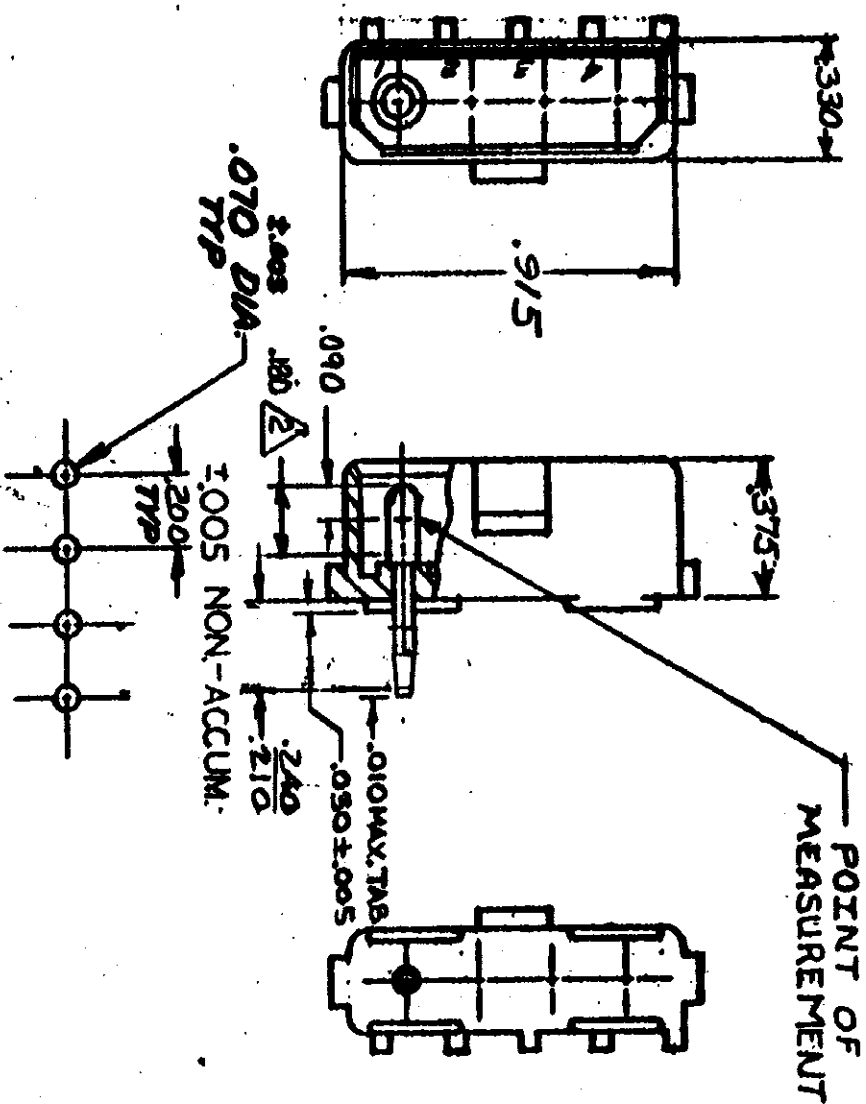


DIMENSIONS IN INCHES. DO NOT SCALE PRINT.



RECOMMENDED LAYOUT FOR  
J25 THICK P.C. BOARD

1. PARTS COMPLY WITH AMP SOLDERABILITY SPEC. NO 109-11-3 CONTACT IS PLATED OVERALL WITH .00050 NICKEL, THEN .00030 GOLD OVER CONTACT LENGTH INDICATED AND MATTE TIN ON SOLDER TAIL END.

OBsolete H.1,2,13	Rev	42-
14,15,16,17,18,19	RS	86
12,23,32,42,52,62,72		
82,92 CM 473		

REV	DESCRIPTION	BY	CHK	DATE
K1	RESTORED	SM	RS	4/1/85
K	REV PER. M-7375	SM	SM	8/24/83
J	REV PER. M-7284	SM	SM	2/14/83
H	ADDED NOTE 2, M-6694	SM	SM	11/25/81
G	REMOVED STICKER M-6543	SM	SM	8/17/81
F	ADDED CHANGE M-5934	SM	SM	7/11/80
E	REV TAIL LENGTH M-5894	SM	SM	5/28/79
D	REVISED M-4161	SM	SM	3/17/77
C	ECN M-3871	SM	SM	9-76
B	ECN M-3452	SM	SM	7/8/76
A	ECN M-3156	SM	SM	2/17/74

REV	DESCRIPTION	BY	CHK	DATE
350544				

REV	DESCRIPTION	BY	CHK	DATE
350544-1	NYLON - NATURAL COPPER ALLOY PRE-TIN			
350544-2	NYLON - NATURAL COPPER ALLOY - GOLD			

ASSEMBLY NO. HSG. MATL & COLOR PIN MATL & FINISH

© 1973 BY AMP INCORPORATED. ALL RIGHTS RESERVED.  
AMP PRODUCTS COVERED BY PATENTS AND/OR PATENT PENDING.

3-30-73

SEE TABLE

AMP INCORPORATED  
MILWAUKEE, WIS.

4 CIRCUIT MATE-N-LOK  
P.C. BOARD HEADER